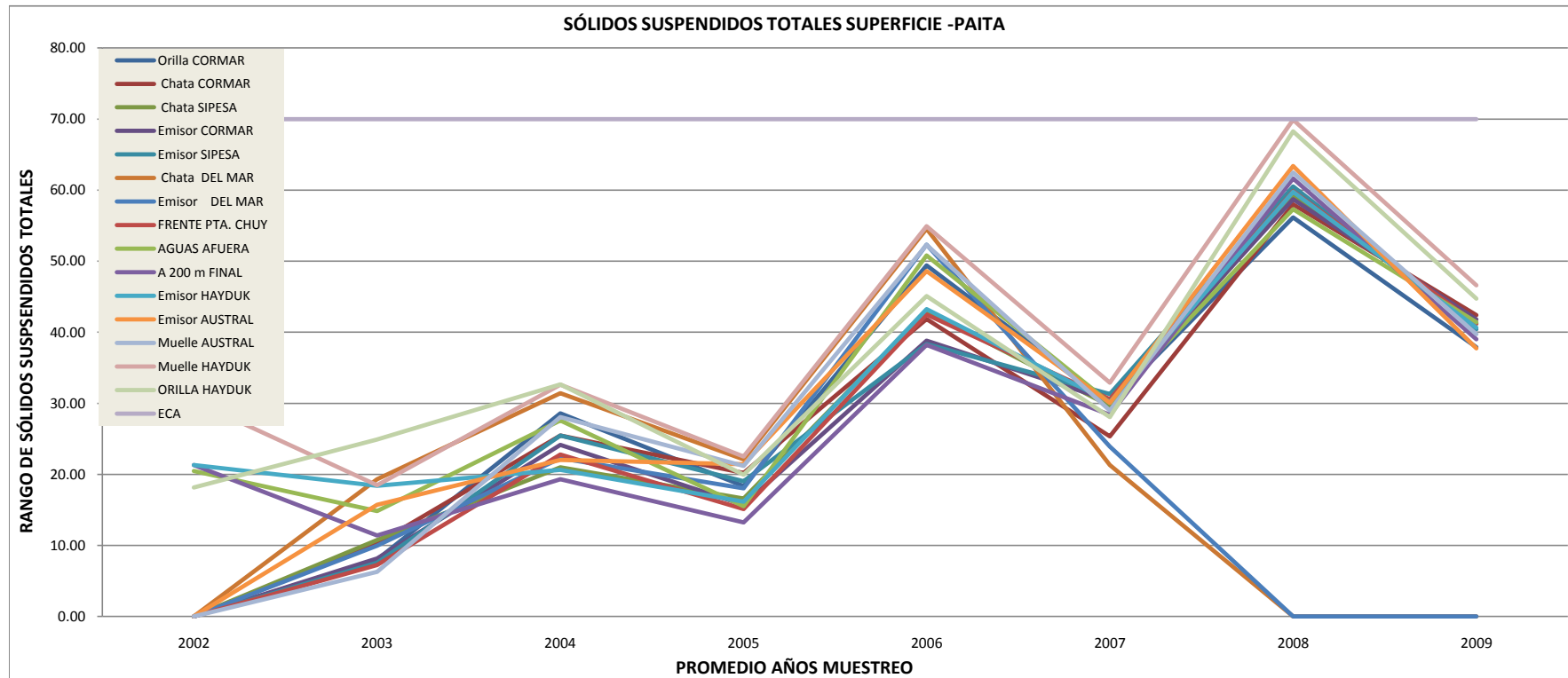


**CONSUMO HUMANO INDIRECTO  
SÓLIDOS SUSPENDIDOS TOTALES SUPERFICIE (PAITA)**

Promedio de Años Muestreo	Orilla CORMAR	Chata CORMAR	Chata SIPESA	Emisor CORMAR	Emisor SIPESA	Chata DEL MAR	Emisor DEL MAR	FRENTE PTA. CHUY	AGUAS AFUERA	A 200 m FINAL	Emisor HAYDUK	Emisor AUSTRAL	Muelle AUSTRAL	Muelle HAYDUK	ORILLA HAYDUK	ECA (*)
2002	0.00	0.00	0.00	0.00	0.00	0.00	0.00	0.00	20.48	21.32	21.32	0.00	0.00	30.36	18.16	70.00
2003	8.02	10.27	10.78	8.16	7.58	19.31	9.98	7.24	14.86	11.41	18.41	15.73	6.29	18.47	24.92	70.00
2004	28.57	25.48	21.01	24.14	25.49	31.41	22.29	22.78	27.59	19.31	20.64	22.03	28.07	32.63	32.66	70.00
2005	18.34	20.20	16.60	15.73	19.03	22.10	18.04	15.14	15.54	13.26	16.16	21.44	21.20	22.50	19.96	70.00
2006	49.41	41.87	43.01	38.81	38.34	54.56	52.33	42.51	50.80	38.20	43.27	48.61	52.29	54.94	45.09	70.00
2007	29.99	25.34	29.63	30.40	31.29	21.31	23.91	30.57	30.06	28.40	30.20	30.06	28.97	32.91	28.06	70.00
2008	56.17	58.00	59.15	58.72	60.52	0.00	0.00	59.82	57.32	61.63	59.76	63.41	62.48	69.89	68.25	70.00
2009	37.88	42.43	41.23	41.83	40.43	0.00	0.00	41.23	41.43	39.00	40.65	37.75	39.73	46.63	44.73	70.00

Fuente: Resultados de Análisis de Monitoreo de Efluentes, ejecutado por CERPER en época de producción (Reportado por las Empresas)

(\*) D.S. N° 002-2008-MINAM



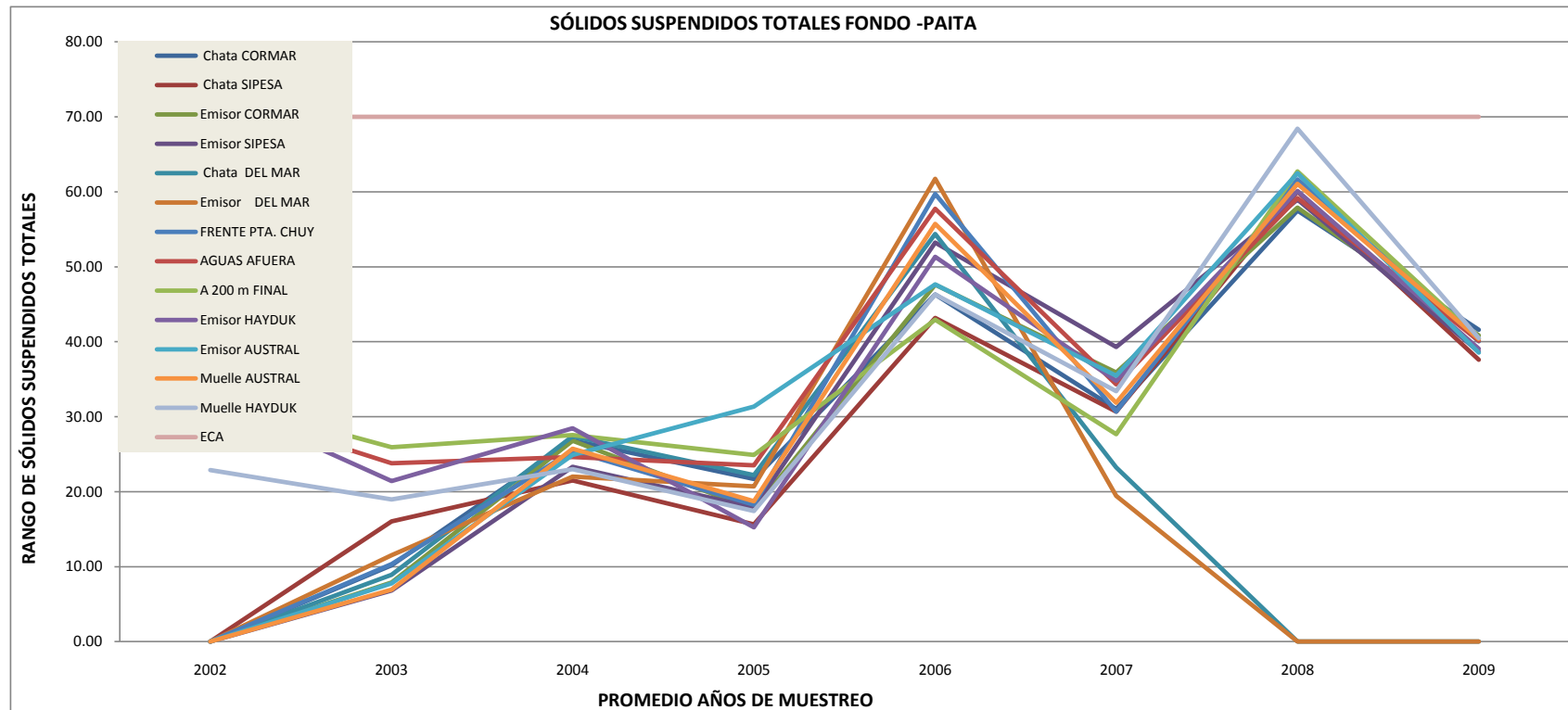
	Orilla CORMAR	Chata CORMAR	Chata SIPESA	Emisor CORMAR	Emisor SIPESA	Chata DEL MAR	Emisor DEL MAR	FRENTE PTA. CHUY	AGUAS AFUERA	A 200 m FINAL	Emisor HAYDUK	Emisor AUSTRAL	Muelle AUSTRAL	Muelle HAYDUK	ORILLA HAYDUK	ECA
2002	0.00	0.00	0.00	0.00	0.00	0.00	0.00	0.00	20.48	21.32	21.32	0.00	0.00	30.36	18.16	70.00
2003	8.02	10.27	10.78	8.16	7.58	19.31	9.98	7.24	14.86	11.41	18.41	15.73	6.29	18.47	24.92	70.00
2004	28.57	25.48	21.01	24.14	25.49	31.41	22.29	22.78	27.59	19.31	20.64	22.03	28.07	32.63	32.66	70.00
2005	18.34	20.20	16.60	15.73	19.03	22.10	18.04	15.14	15.54	13.26	16.16	21.44	21.20	22.50	19.96	70.00
2006	49.41	41.87	43.01	38.81	38.34	54.56	52.33	42.51	50.80	38.20	43.27	48.61	52.29	54.94	45.09	70.00
2007	29.99	25.34	29.63	30.40	31.29	21.31	23.91	30.57	30.06	28.40	30.20	30.06	28.97	32.91	28.06	70.00
2008	56.17	58.00	59.15	58.72	60.52	0.00	0.00	59.82	57.32	61.63	59.76	63.41	62.48	69.89	68.25	70.00
2009	37.88	42.43	41.23	41.83	40.43	0.00	0.00	41.23	41.43	39.00	40.65	37.75	39.73	46.63	44.73	70.00

**CONSUMO HUMANO INDIRECTO  
SÓLIDOS SUSPENDIDOS TOTALES FONDO (PAITA)**

Promedio de Años Muestreo	Chata CORMAR	Chata SIPESA	Emisor CORMAR	Emisor SIPESA	Chata DEL MAR	Emisor DEL MAR	FRENTE PTA. CHUY	AGUAS AFUERA	A 200 m FINAL	Emisor HAYDUK	Emisor AUSTRAL	Muelle AUSTRAL	Muelle HAYDUK	ECA (*)
2002	0.00	0.00	0.00	0.00	0.00	0.00	0.00	31.52	32.48	32.28	0.00	0.00	22.88	70.00
2003	10.18	16.04	7.89	6.82	8.93	11.53	10.36	23.81	25.93	21.43	7.76	6.93	18.98	70.00
2004	26.82	21.49	26.81	23.31	27.38	22.02	25.47	24.61	27.56	28.46	24.89	25.73	23.00	70.00
2005	21.71	15.66	17.61	17.91	22.20	20.69	18.24	23.50	24.92	15.23	31.33	18.73	17.41	70.00
2006	46.29	43.16	47.61	53.23	54.39	61.73	59.71	57.74	42.93	51.33	47.63	55.70	46.31	70.00
2007	31.03	30.69	35.89	39.29	23.23	19.43	30.69	34.31	27.66	34.80	35.46	31.86	33.40	70.00
2008	57.51	60.02	57.91	58.97	0.00	0.00	61.64	59.14	62.73	60.10	62.48	61.06	68.43	70.00
2009	41.60	37.60	40.83	38.65	0.00	0.00	40.05	40.13	40.40	39.05	38.55	40.38	40.50	70.00

Fuente: Resultados de Análisis de Monitoreo de Efluentes, ejecutado por CERPER en época de producción (Reportado por las Empresas)

(\*). D.S. N° 002-2008-MINAM



	Chata CORMAR	Chata SIPESA	Emisor CORMAR	Emisor SIPESA	Chata DEL MAR	Emisor DEL MAR	FRENTE PTA. CHUY	AGUAS AFUERA	A 200 m FINAL	Emisor HAYDUK	Emisor AUSTRAL	Muelle AUSTRAL	Muelle HAYDUK	ECA
2002	0.00	0.00	0.00	0.00	0.00	0.00	0.00	31.52	32.48	32.28	0.00	0.00	22.88	70.00
2003	10.18	16.04	7.89	6.82	8.93	11.53	10.36	23.81	25.93	21.43	7.76	6.93	18.98	70.00
2004	26.82	21.49	26.81	23.31	27.38	22.02	25.47	24.61	27.56	28.46	24.89	25.73	23.00	70.00
2005	21.71	15.66	17.61	17.91	22.20	20.69	18.24	23.50	24.92	15.23	31.33	18.73	17.41	70.00
2006	46.29	43.16	47.61	53.23	54.39	61.73	59.71	57.74	42.93	51.33	47.63	55.70	46.31	70.00
2007	31.03	30.69	35.89	39.29	23.23	19.43	30.69	34.31	27.66	34.80	35.46	31.86	33.40	70.00
2008	57.51	60.02	57.91	58.97	0.00	0.00	61.64	59.14	62.73	60.10	62.48	61.06	68.43	70.00
2009	41.60	37.60	40.83	38.65	0.00	0.00	40.05	40.13	40.40	39.05	38.55	40.38	40.50	70.00

